

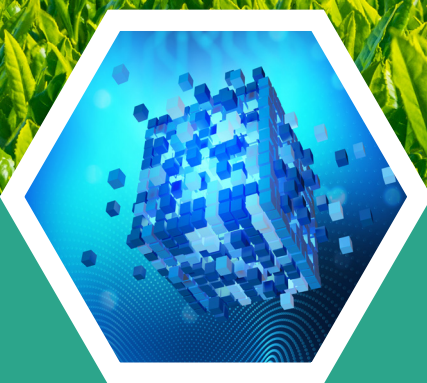
ESGPRO

WE SIMPLIFY YOUR ESG REPORTING

Discover the most innovative, versatile, and cost-effective approach to Environment, Social, and Governance reporting, and simplify your carbon footprint goals too.

OUR SERVICES





When you combine the security of Blockchain Technology with the power of Artificial Intelligence, and then add a team of expert consultants, amazing things can happen. Fast.

We set out to create the perfect approach to ESG reporting, one which makes it fast, efficient, practical and affordable.



We saw the skills shortage, hundreds of ESG frameworks, the software suites with astronomical price tags, and knew their had to be a better approach.

Businesses are producing carbon reports and not realising where that data belongs. It's all turned into an accounting exercise, and that misses the point.

There's a climate emergency, a society changed forever due to the pandemic, and more business regulations too. Doing nothing is not an option, but how to fix it?

Our experts enable your reporting to be the best. We've invested in them so you're free to focus on your business. It makes sense.

We've designed a fantastic methodology which saves your staff from being bogged down and distracted by yet more software. We do the work for you!

Our consultants leverage the security of blockchain and the power of A.I. They work in the modern, digital way: remotely.

We train, analyse, audit, and much more, so you get the results. It's fast, and it works!

With UK headquarters and offices in Europe, our multi-lingual global coverage can support you directly.

Amidst complex supply chains, and in the face of major new E.U. and U.K. legislation, we've got the resources you need.



THE PROCESS



We're proud of being able to support everyone from micro-SMEs to large corporations with the same expert service and access to the world's leading reporting platforms.

Your ESG reporting centres on answering questions derived from the multiple standards contained within various Frameworks.

For example, the universal starting point is widely accepted as the GRI (Global Reporting Institute). This contains 39 standards, ranging across topics as diverse as Energy, Waste, Anti-corruption and Biodiversity.

With ESG PRO, you have the option to add additional frameworks, such as the SASB, so creating the most comprehensive report perfectly suited to your organisation.

We start by identifying the most appropriate framework and standards appropriate to the nature of your operations and your industry.

Within each topic, the questions will be of relevance to various members of your organisation. This requires us to help you determine your stakeholders and your 'disclosing parties' - your staff who will be providing the data.

Your dedicated consultant will

spend time familiarising your staff with the purpose of the topic, and how to approach responding.

When reviewing the responses, your staff will receive suggestions as to how to improve the reply, or there might be a request for documents in support of the statement.

The supporting documents sought are wide ranging, and include policies, training records and so forth. Wherever suitable, the ESG PRO team also draft bespoke policy and training documents for you.

As the questions are finalised, we move into a continuous improvement phase: what needs to be improved to ensure better results in subsequent reports?

Such Action Plans may include your planned initiatives to reduce your carbon emissions, or strategies to reduce staff turnover or health and safety incidents.

So you can demonstrate your performance, which is graded on a scale from D - AAA, across the three ESG criteria, your audited

MULTIPLE FRAMEWORKS

We've got you covered! Your dedicated ESG PRO consultant will navigate your organisation through the frameworks you require, including those required by global stock exchanges.



report is submitted by our consulting team to the appropriate bodies. You will also receive a bespoke public-facing ESG report which should be published on your website. You might then work on your carbon footprint reporting concurrently, either with our specialist guidance or self-driven.

For optimal efficiency, we recommend deploying our software solutions only when your first reports are completed. Your staff will thank you, and you'll avoid all of the common mistakes.



OUR CORE SERVICES



ESG Reporting

Our unique ESG reporting service is cost and time effective.

We manage your data gathering and report publication, so you save 95% of the cost versus handling this in-house. It's also ten times faster!

Carbon Footprint

We offer a range of solutions to manage your carbon reporting requirements, as well as advisory services to formulate your carbon reduction plan.

Our U.K. clients can request on-site consultancy if preferred.



Corporate Governance

The quest to extend and enhance your corporate governance should be unrelenting.

We can dive deeper into your organisation and cover risk, cybersecurity, data protection and beyond.

10X
FASTER



95%
SAVINGS

WE FOCUS ON ESG SO YOU CAN FOCUS ON YOUR BUSINESS

ESG reporting adds value to your organisation. It enhances your reputation and delivers critical competitive advantages.

ESG PRO saves your staff time, and all without the costs of buying software and then employing in-house specialists or contracting expensive on-site consultants.

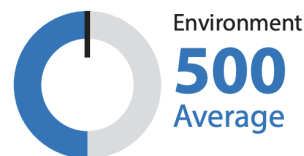
WHY REPORT ON ESG?

- Appeal to investors and attract capital
- Stay ahead of regulatory requirements
- Manage risks stemming from ESG issues
- Obtain real value and better terms from financial sector
- Build reputation and trust amongst customers and business partners
- Increase employee retention and motivation
- Identify your strengths and weaknesses
- Create a competitive advantage

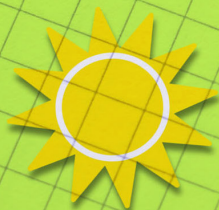
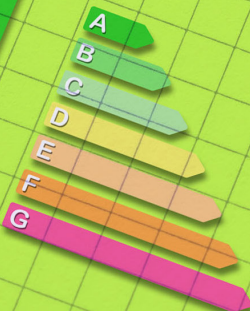


ESG Summary

Your ESG Total Score
on Feb 3, 2021



ECO FRIENDLY



WHEN TO REPORT?

You should time your ESG report to be released annually alongside your accounts.

ESG isn't a Pass/Fail, but a statement of fact. There's no reason to not publish!

ENVIRONMENT

Includes energy, water and effluents, emission, waste, biodiversity, supplier environmental assessments, carbon footprint and more

SOCIAL

Includes economic performance, market presence, indirect economic impacts, procurement practices, anti-corruption, anti-competitive behaviour, taxation and more

GOVERNANCE

Includes employment, labour relations, non-discrimination, equal opportunities, child labour, local communities, marketing, health and safety, labelling and more.

ABOUT US



We're a UK company founded in 2016 and now backed by investors who believe that every business has a part to play in improving our society.

Our founder, Humperdinck Jackman, has worked in corporate governance for three decades. He's also spent several years working in northern Kenya to protect a wildlife reserve from poachers.

TECHNOLOGY CLIENTS

facebook.



The Motley Fool.



Morgan Stanley

HYUNDAI
STEEL



primafoods
UK Limited



GEODIS

A snapshot of just some of the major global brands using our technology platforms



ESG and carbon reporting are the new boardroom imperatives. It's time to take action!



CONTACT US

ESGPRO 
www.esgpro.co.uk | info@esgpro.co.uk

Shrawley House, Shrawley,
WR6 6TFG, United Kingdom
Phone: +44(0)1299 828346

